

CAUTION

MIDDLE BOLTON LAKE

**TO BE TREATED WITH PESTICIDE ON
THURSDAY, AUGUST 3, 2017**

Pesticide Name(s): Reward
Time To Be Treated: 10:00 AM
CT DEEP PERMIT AQUA-2017-591

**DO NOT USE THE WATER FOR THE FOLLOWING
PURPOSE(S) UNTIL THE DATE NOTED BELOW:**

DRINKING AND COOKING	08/07/2017
SWIMMING	08/04/2017
BOATING AND FISHING	No Restriction
WATERING OF LIVESTOCK	08/05/2017
IRRIGATION	08/09/2017

FOR FURTHER INFORMATION CONTACT:

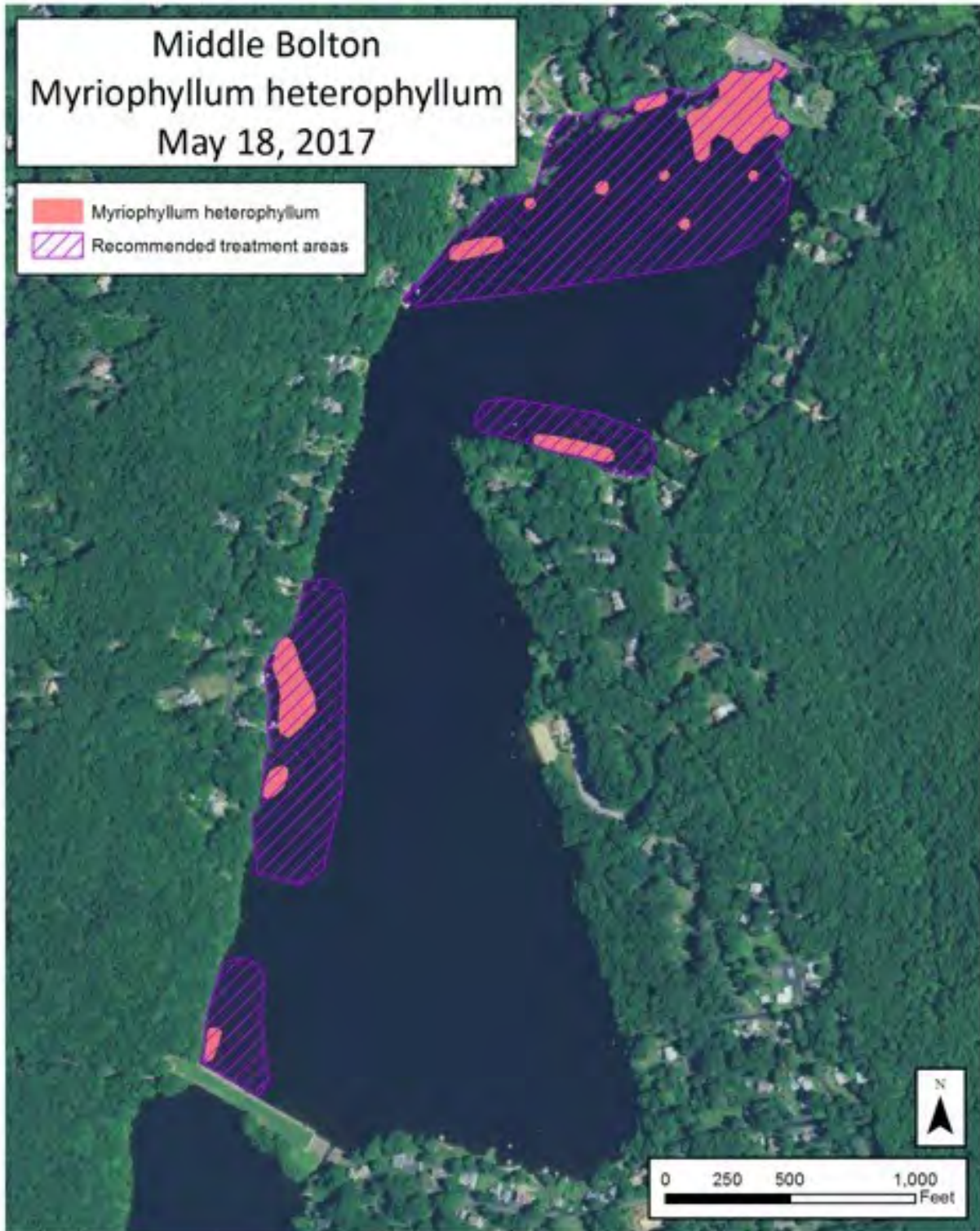


590 Lake Street
Shrewsbury, MA 01545
508-885-0101

THIS SIGN MUST REMAIN POSTED 7 DAYS AFTER TREATMENT OR UNTIL THE LATEST DATE LISTED ABOVE

Middle Bolton
Myriophyllum heterophyllum
May 18, 2017

- Myriophyllum heterophyllum
- Recommended treatment areas



Myriophyllum heterophyllum

Common names:

Variable-leaf watermilfoil
Variable watermilfoil
Two-leaf watermilfoil

Origin:

Southern United States

Key features:

Plants are submersed

Stems: Dark brown stems extend to the water's surface and spread to form large mats

Leaves: Triangular with ≤ 11 pairs of leaflets. Leaves are dissected and whorled (4-6 leaves/whorl) resulting in a feathery appearance with leaf whorls < 1 inch apart giving it a ropy appearance

Flowers: Inflorescence spike 2-14 inches (5-35 cm) long extend beyond the water's surface with flowers in whorls of four with reddish petals

Fruits/Seeds: Fruits are almost round, with a rough surface

Reproduction: Fragmentation and seeds

Easily confused species:

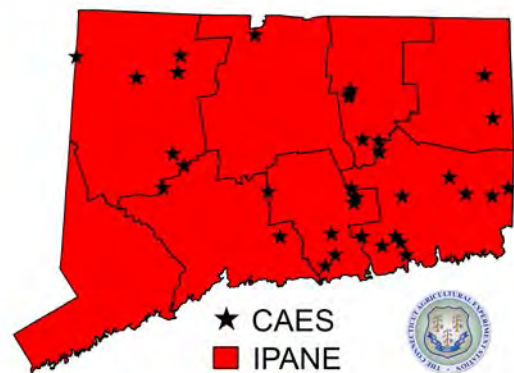
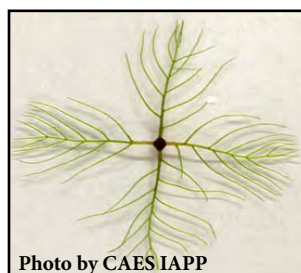
Eurasian watermilfoil: *Myriophyllum spicatum*

Low watermilfoil: *Myriophyllum humile*



Copyright 1991 University of Florida
Center for Aquatic and Invasive Plants

Myriophyllum heterophyllum
Variable-leaf milfoil



Cabomba caroliniana

Common names:

Fanwort

Carolina fanwort

Origin:

Southeast United States

South America

Key features:

Plants are submersed

Stems: Can be 6 feet (2 m) long

Leaves: Dissected, opposite leaves 0.8-2 inches (2-5 cm) are fan-like and made up of forked leaflets attached to the stem by a petiole. Floating leaves 0.2-0.8 inches (6-20 mm) wide are oblong and produced on flower shoots

Flowers: Small, solitary flowers are usually white to pinkish

Fruits/Seeds: Flask shaped

Reproduction: Seed and fragmentation

Easily confused species:

Watermilfoils: *Myriophyllum* spp.

White water crowfoot: *Ranunculus longirostris*

Water marigold: *Megalodonta beckii*

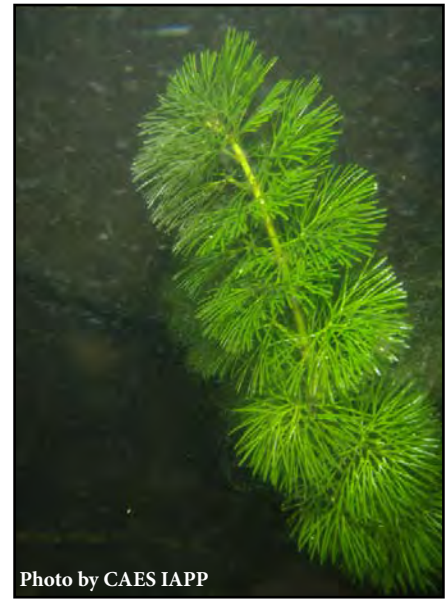
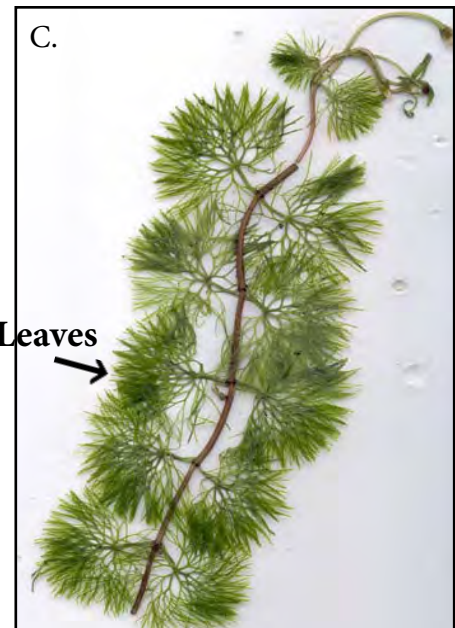
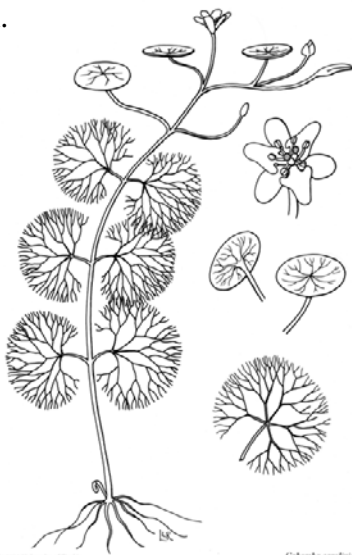


Photo by CAES IAPP



Opposite Leaves

A.



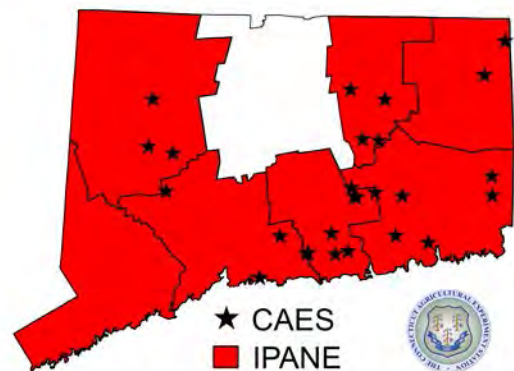
B.



A. Copyright 1991 Univ. of Florida, Center for Aquatic and Invasive Plants

B. Copyright 2002 Univ. of Florida, Photo by A. Murray

C. Photo by A. Smagula



★ CAES
■ IPANE

