



Welcome to the Fourth Annual Bolton Lakes Watershed Forum

◆ *Hosted by Friends of Bolton Lakes*



Thank You For Coming

- ◆ Please feel free to ask questions
- ◆ There will be time for extended discussions at the end of the evening
- ◆ Help yourself to refreshments at any time



We need volunteers!

- ◆ FBL is a volunteer led organization
- ◆ We have a small board, many of whom have dedicated a number of years of service
- ◆ We need volunteers for short-term, specific projects!
- ◆ We need additional board members



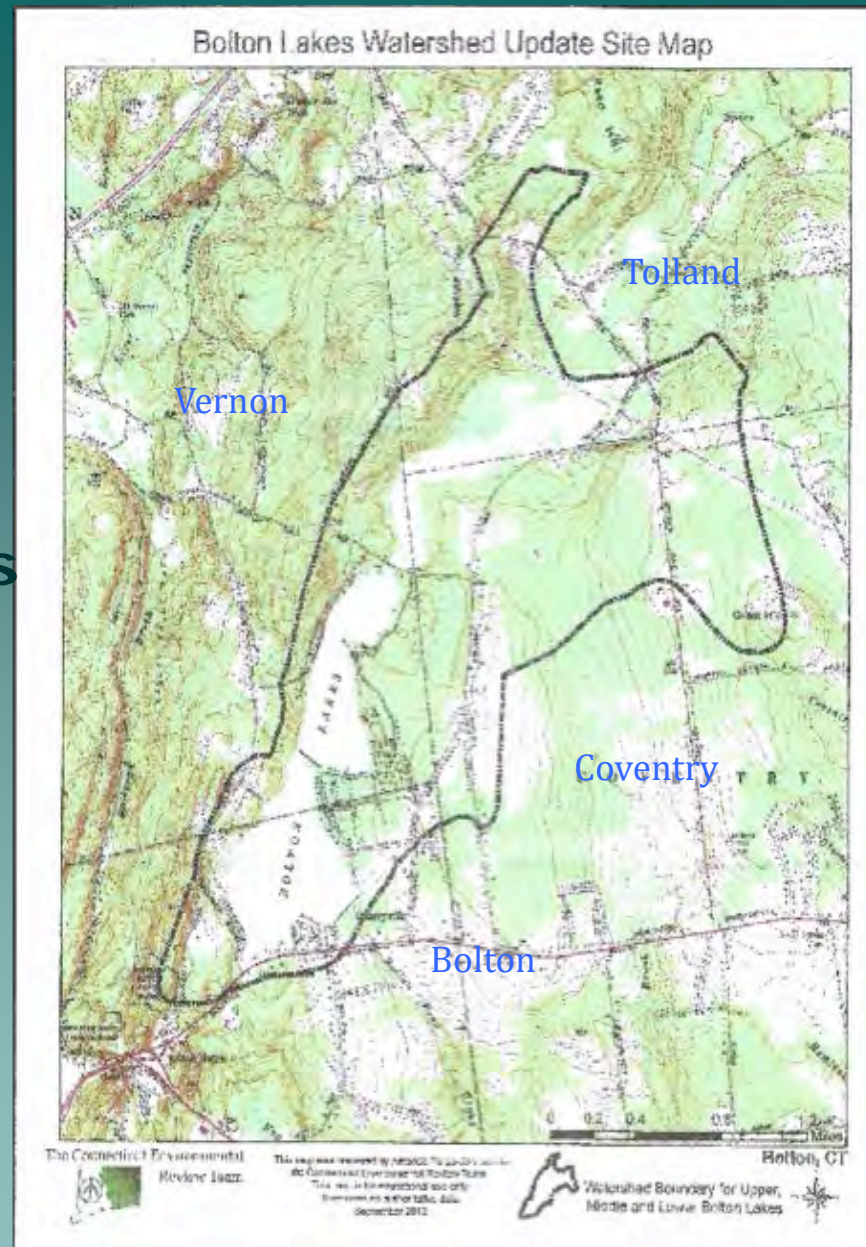
Objectives of the Forum

- ◆ Provide an update and status of the past year's activities to improve and preserve the Bolton lakes and surrounding Watershed;
- ◆ Learn about "The Bolton Lakes in Context" from UConn's Professor Thorson
- ◆ Provide the opportunity for discussion related to the lakes and watershed



Agenda

- ◆ **Welcome, Introduction & Summary of 2017 FBL activities**
Shelly Jewell-FBL President
- ◆ **2018 Goals and Objectives**
Shelly Jewell
- ◆ **"The Bolton Lakes in Context"**
Professor Robert Thorson
- ◆ **Panel Discussion**
Q & A
- ◆ **Refreshments & Socializing**



THE OUTLINED AREA RUNS NORTH & SOUTH



2017 Accomplishments



Lakes/Watershed Management

- ◆ Advocated for treatment of variable leaved milfoil in Middle Bolton Lake
- ◆ Initiated program to stem fanwort entry into the Watershed
- ◆ **FBL Volunteers assisted**
- ◆ Issued report to towns and advocated for treatment



Lakes/Watershed Management

- ◆ Coordinated drawdown requests with Bolton and Vernon
- ◆ Met with State Representative Robin Green, DEEP Dept. of Fisheries, Bolton & Vernon to successfully advocate for abatement of channel catfish stocking



Lakes/ Watershed Management

- ◆ Built kiosk on Middle/Lower Lake dam to discourage recreational users from dam crossing
- ◆ Continued water quality measurements & reported them to NEAR
- ◆ Initiated collaborative program with Wesleyan University regarding lake bottom sediment analysis
- ◆ Samples were also submitted to the CT Agricultural Experiment Station for nutrient analysis



**Professor Ku & Wesleyan Students
collecting core sediment samples**



Education

◆ Spring Seminar:

"Landscaping in a Watershed for Healthier Lakes & Rivers," 4/20/17

- Kathy Connelly, landscape designer
- Included 7 site visits to watershed properties

◆ Summer Seminar:

"Invasive Plants—State of the State,"
7/27/17

- Greg Bugbee, CT Agricultural Experiment Station



Communication

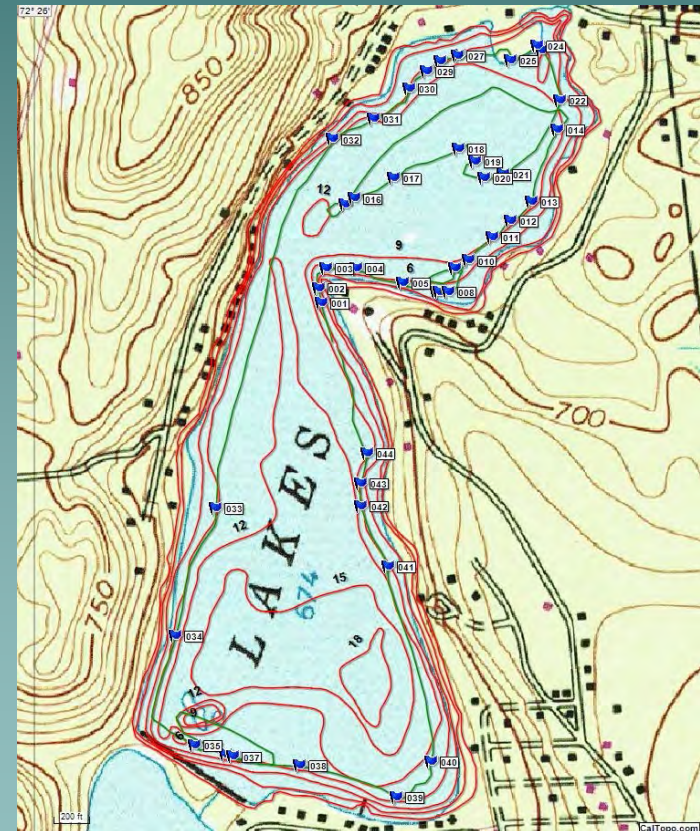
- ◆ Continued e-mail distribution to notify residents of upcoming water treatments, events and other news
- ◆ Semi-annual newsletter
- ◆ Maintained FBL website:
- ◆ www.friendsofboltonlakes.org
- ◆ Ongoing relationship with CT Federation of Lakes



Science Committee: Three Lakes Testing & Surveying

Annual Aquatic Plant Surveys
& Invasive Plant Awareness

Periodic Water Clarity and
Chemical Analysis





2018 GOALS & OBJECTIVES



2018 Goals & Objectives

1. Create a functioning, effective, affordable, watershed plan
 - a. Immediate focus on elimination of fanwort from watershed
 - b. Develop an initial, actionable plan for 2018 activities in cooperation with the towns & DEEP
 - c. Seek grant funding to develop a long range 9-point EPA compliant watershed plan



Watershed & Watershed Management

- ◆ Every body of water (e.g., rivers, lakes, ponds, streams, and estuaries) has a watershed. The watershed is the area of land that drains or sheds water into a specific receiving waterbody, such as a lake or a river.
- ◆ Watershed management describes the process of implementing land use & water management practices to protect and improve the quality of the water and other natural resources



Watershed Management Planning

- ◆ Watershed management planning results in a plan or a blueprint of how to best protect and improve the water quality and other natural resources in a watershed.
- ◆ Often, watershed boundaries extend over political boundaries into adjacent municipalities.
- ◆ Therefore need a comprehensive planning process that involves all affected municipalities for successful watershed management.



Watershed Management Planning

- ◆ Watershed management planning identifies those activities that affect the health of the watershed
- ◆ Makes recommendations to reduce adverse impacts from pollution
- ◆ Plan becomes an efficient way to prioritize the implementation of watershed management plans when resources are limited
- ◆ http://www.ct.gov/deep/cwp/view.asp?a=2719&q=325628&deepNav_GID=1654%20



2018 Goals & Objectives cont.

2. Increase the involvement of members/volunteers

- a. Need new board members
- b. Identify additional volunteers for project-based activities
- c. Continue to improve the utility & content of the FBL website



2018 Goals & Objectives

3. Engage public recreational lake users

- a. Hold FBL volunteer events at launch sites to educate the public and garner interest



2018 Goals & Objectives

4. Continue efforts to actively monitor lake conditions and inform towns, Northeast Aquatic Research (NEAR) & DEEP

- a. Invasive plant identification & mapping
- b. Water quality measurements
- c. Recommendations for treatment



2018 Goals & Objectives

5. Continue to enhance collaboration with towns

a. Semi-annual town meetings

b. Bolton Lakes Watershed Conservation Alliance

6. Continue to provide educational forums for members and residents

7. Continued partnership with the CT Federation of Lakes



Bolton Lakes in Context

Dr. Robert M. Thorson